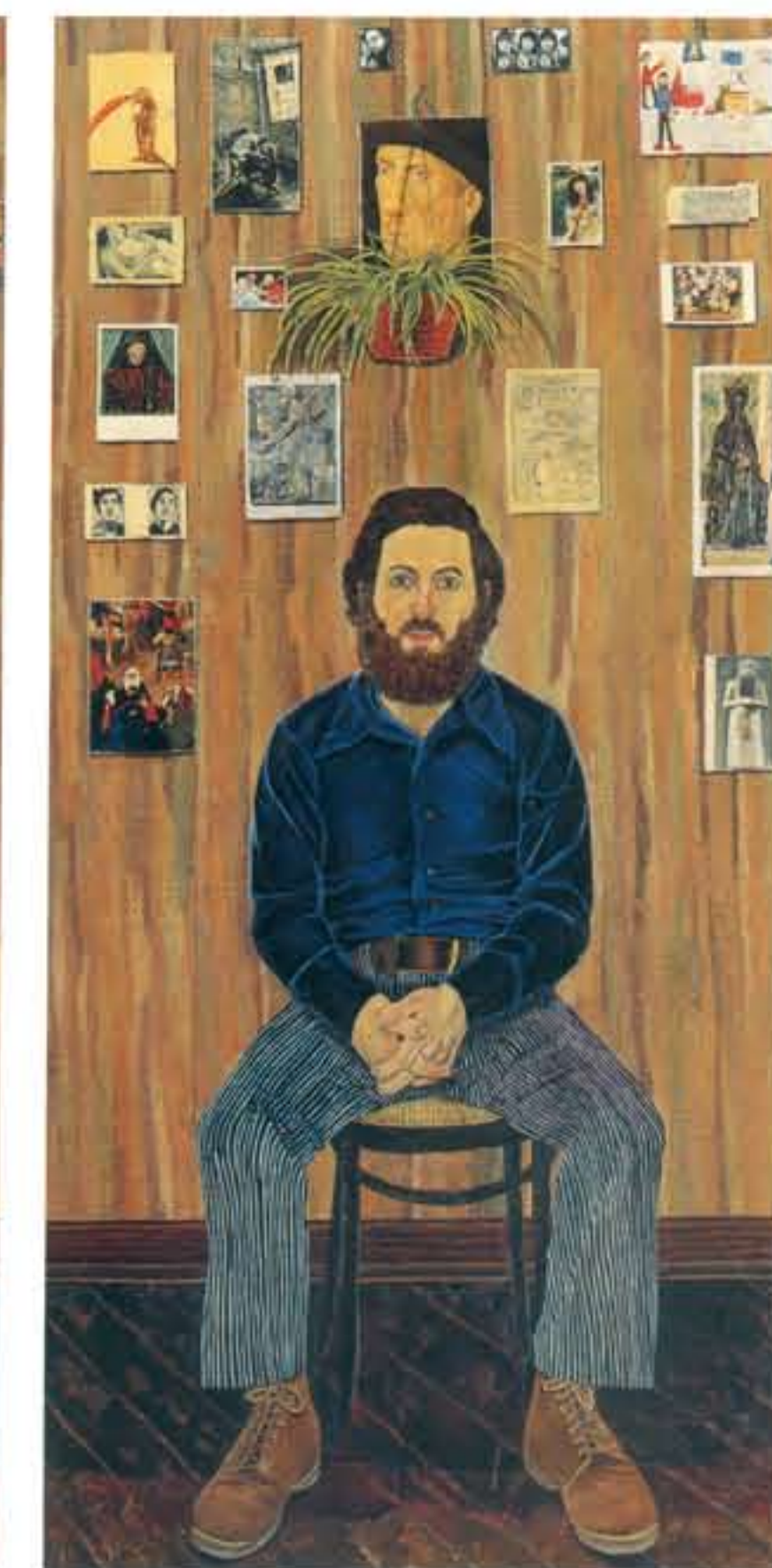


Simon Dinnerstein, whose early family portrait 3-panel "Fulbright Triptych" extends across fourteen feet, often paints the figure in unexpected juxtaposition with landscape or interior elements. (The infant daughter, Simone, pictured on his wife's lap, is now a concert pianist.) His "psychologically complicated and visually demanding"⁵⁰ images often contain much specific information, presented in great detail, which cannot be extracted from any page-sized reproduction.

The winner of numerous awards, Fulbright and Louis Comfort Tiffany Grants, The Rome, Ralph Fabri and Canon Prizes, the Childe Hassam, American Academy of Arts and Letters awards and others, he has had seventeen solo exhibitions and is affiliated with the ACA Gallery in New York. He is a graduate of the City College of New York and studied at the Brooklyn Museum Art School with Louis Grebenak, David Levine, and Richard Mayhew.

An elected member of the American Academy of Design, Dinnerstein, speaking of his influences, says "what interests me is the ability of ... Degas, Balthus, Lucien Freud and Antonio López García ... to deal with the figure ... to create art ... rich in scale, yet abstract, adventurous, experimental ... deeply human ... a combination of modernism and tradition ... of skill, medium and ... a fresh, personal response to the human form in art. ... Hopefully, my work speaks to these issues."⁵¹

Dinnerstein has taught for many years at The New School for Social Research, Parsons School of Design, and New York City Technical College.



The Fulbright Triptych, oil on wood panels (79.5" x 156"), c.1971-74. Left panel, 79.5" x 38.25"; middle panel, 79.5" x 79.5"; right panel, 79.5" x 38.25". Collection of Palmer Museum of Art, Pennsylvania State University, Gift of Friends of the Palmer Museum of Art.

Simon Dinnerstein



Photograph © Cynthia Dantzig.



Passage of the Moon, oil and gold leaf on wood panel, 47.5" x 67.5", 1998. Courtesy of the artist and ACA Gallery.



Calling Card, oil on wood panel, 25.5" x 33", 1980. Collection of Lorraine and Harry Shatz. Courtesy of the artist and ACA Gallery.